



TRUCK PARTS

SPARE PARTS
CATALOGUE



SCANIA



TMA TRUCK PARTS was established in Konya city in 2012 under the brand called TMA TRUCK PARTS to supply transmission gears, oil pumps, fuel pumps and differential gears for European Trucks such as Volvo, Scania , Mercedes, ZF, Cummins and Tractor Applications for agriculture. Since its establishment in a short time has found itself in the world market with quality.

Gaining the power from the rising success graph and the support of its customers, it strives for 100% customer satisfaction by constantly expanding its product range with its latest technology machines and experienced technical personnel and continuously inspecting its products with the latest technology devices in the quality control unit.

Heavy vehicle gear transmission gear module 8 producing over 600 types of gear which is manufacturing Ary 400 mm in diameter and produces over 150 kinds of oil pump. Customer support is preparing today for the future of the technology sector itself and from combining quality with value.

In the production of heavy duty gear transmission gears, TMA TRUCK PARTS produces 8 Modules up to 400 mm in diameter and produces over 3000 types of gear and over 300 types of oil pumps.

By combining customer support with technology and quality values, TMA TRUCK PARTS is preparing itself for the future of the sector.





Transmission



**TMA CODE: 20012001
SYNCHRONIZATION RING**

OEM 1849451 1489836

APLICACION: GR/875 R-905 R
GRS/895 R GRSGRSO/
905 R



**TMA CODE: 20012002
SYNCHRONIZATION CONE**

OEM 1495267

APLICACION: GR/875 R-905 R
GRS/895 R GRSGRSO/
905 R



**TMA CODE: 20012003
RING ADAPTED**

OEM 1495269

APLICACION: GR/875 R-905 R
GRS/895 R GRSGRSO/
905 R



**TMA CODE: 20012004
SYNCHRONIZATION BODY**

OEM 1788922 1730175

APLICACION: GR/875 R-905 R
GRS/895 R GRSGRSO/
905 R



**TMA CODE: 20012005
INTERMEDIATE RING**

OEM 1849454
1489827

APLICACION: GR/875 R-905 R
GRS/895 R GRSGRSO/
905 R



**TMA CODE: 20012006
INTERMEDIATE RING**

OEM 1752963

APLICACION: GR/875 R-905 R
GRS/895 R GRSGRSO/
905 R

Transmission



**TMA CODE: 20012007
SYNCHRONIZER CONE**

OEM 1849457 1508855

APLICACION: GR/875 R-905 R
GRS/895 R GRSGRSO/ 905 R



**TMA CODE: 20012008
SYNCHRONIZER CONE**

OEM 1828871 1849460 1508851

APLICACION: GRS/905 GRS-
GRSO/905R



**TMA CODE: 20012009
SYNCHRONIZATION RING**

OEM 1543357

APLICACION: GR/875 R-905 R
GRS/895 R GRSGRSO/
905 R



**TMA CODE: 20012010
SYNCHRONIZATION RING**

OEM 1543359

APLICACION: GR/875 R-905 R
GRS/895 R GRSGRSO/
905 R



**TMA CODE: 20012011
SYNCHRONIZATION RING**

OEM 1828869 1543361

APLICACION: GR/875 R-905 R
GRS/895 R GRSGRSO/
905 R



**TMA CODE: 20012012
SYNCHRONIZATION RING**

OEM 1438526 381227 1438525

APLICACION: GR/801-900R
GRS/890-900-920R
GRH/880 NEW

Transmission



**TMA CODE: 20012013
INTERMEDIATE CONE**

OEM 1466318 1383895
1818323 1383896

APLICACION: GR/801-900R
GRS/890-900-920R
GRH/880 NEW



**TMA CODE: 20012014
SYNCHRONIZATION RING**

OEM 1529950 1401620

APLICACION: GR/801-900R
GRS/890-900-920R
GRH/880 NEW



**TMA CODE: 20012015
RING E.4.25 MM**

OEM 1533848 1401622

APLICACION: GR/801-900R
GRS/890-900-920R
GRH/880 NEW



**TMA CODE: 20012016
SLIDING SLEEVE**

OEM 1529939 1111295 369906
371692

APLICACION: GR/801-900 GR-
GRH/880 GRS/890-
900-920R



**TMA CODE: 20012017
RING ADAPTED**

OEM 1300061

APLICACION: GR/801-900R
GRS/890-900-920R



**TMA CODE: 20012018
BOLT ADAPTED**

OEM 602592 1340002
383138

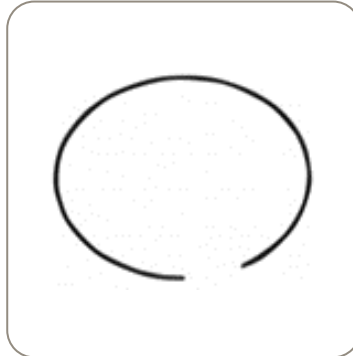
APLICACION: GR/801-900R
GRS/890-900-920R

Transmission



**TMA CODE: 20012019
RING ADAPTED**

OEM 602649
1300061-1438526-1466318-
1529950-1401622-602592
APLICACION: GRS/900



**TMA CODE: 20012020
RING**

OEM 1730173
APLICACION: GR/875-905 R
GRS-GRSO/895-905 R



**TMA CODE: 20012021
SYNCHRONIZATION RING**

OEM 1756447
1382465-1395623-1370151
1380409
APLICACION: GR/801-900 GR-
GRH/880 GRS/890-
900-920R



**TMA CODE: 20012022
SYNCHRONIZATION BODY**

OEM 1121658
APLICACION: GR801, GR801R,
GR900, GR900R, GRH900



**TMA CODE: 20012023
SYNCHRONIZER COLUMN**

OEM 602593
374334 369910 369911
APLICACION: GR/801-900R
GRH/900



**TMA CODE: 20012024
SYNCHRONIZER KIT**

OEM 906056
APLICACION: GR / 875R - 905R
GRS / 895R - 905R
GRSO / 905R - 925R

Transmission



**TMA CODE: 20012025
SYNCHRONIZER SET**

OEM 906057 - 2246172

APLICACION: GR / 875R - 905R
GRS / 895R - 905R
GRSO / 905R - 925R



**TMA CODE: 20012026
SYNCHRONIZER SET**

OEM 906059 - 2246168

APLICACION: GR / 875R - 905R
GRS / 895R - 905R
GRSO / 905R - 925R



**TMA CODE: 20012027
SYNCHRONIZER KIT**

OEM 906058

APLICACION: GR / 875R - 905R
GRS / 895R - 905R
GRSO / 905R - 925R



**TMA CODE: 20012028
SYNCHRONOUS SET**

OEM 2246173

APLICACION: GR / 875R - 905R
GRS / 895R - 905R
GRSO / 905R - 925R



**TMA CODE: 20012029
SYNCHRONIZER SET**

OEM 2246171

APLICACION: GR / 875R - 905R
GRS / 895R - 905R
GRSO / 905R - 925



**TMA CODE: 20012030
SYNCHRONIZER SET**

OEM 2246167

APLICACION: GR / 875R - 905R
GRS / 895R - 905R
GRSO / 905R - 925R

Transmission



**TMA CODE: 20012031
SYNCHRONOUS SET**

OEM 906177

APLICACION: GR / 875R - 905R
GRS / 895R - 905R
GRSO / 905R - 925R



**TMA CODE: 20012032
SLIDING SLEEVE**

OEM 378646

APLICACION: GR/900 R
GRS/890-900-920 R



**TMA CODE: 20012033
SYNCHRONIZATION RING**

OEM 1109586

APLICACION: GR-GRH/900 R



**TMA CODE: 20012034
SUN GEAR**

OEM 1459308

1373175 1325348 1923810

APLICACION: GR/801-900
GRS/890-900-920
GRH/900



**TMA CODE: 20012035
FIXED RING**

OEM 378627

APLICACION: GR-GRS/900
GRS/890-920 GRH/900



**TMA CODE: 20012036
SYNCHRONIZATION SET**

OEM 1116475

APLICACION: GRS/890-900-
920 GRS/900 R

Transmission



**TMA CODE: 20012037
SYNCHRONIZATION CONE**

OEM 1116477

APPLICATION: GR/801-900 R
GRS/890-900-920 R



**TMA CODE: 20012038
SYNCHRONIZER BUSHING**

OEM 1405981 1300063

APPLICATION: GRS/890-900-
920 R



**TMA CODE: 20012039
SYNCHRONIZER BUSHING**

OEM 1305456 1376499

APPLICATION: GR/801-900R
GRS/890-900



**TMA CODE: 20012040
INPUT SHAFT**

OEM 1377308

APPLICATION: GR/900 R NEW



**TMA CODE: 20012041
PRIMARY TREE**

OEM 1387295

APPLICATION: GR/900 R NEW



**TMA CODE: 20012042
PINON SATELLITE 20 D**

OEM 1373174 389409

APPLICATION: GR/801-900 R
GRS/890-900-920 R

Transmission



TMA CODE: 20012043
SATELLITE AXIS

OEM 1318713

APLICACION: GR/801-900 R
GRS/890-900-920 R



TMA CODE: 20012002
Gear 3a 32 D

OEM 1367794

APLICACION: GRS/890-900
NEW



TMA CODE: 20012003
Gear 3a 32 D

OEM 1367794

APLICACION: GR/875 R-905 R
GRS/895 R GRGRSO/
905 R



TMA CODE: 20012046
LOW GEAR 40 D

OEM 1394865

APLICACION: GRS/9020-920 R
NEW



TMA CODE: 20012047
GEAR 2A 24 D

OEM 1116473

APLICACION: GRS/890-900
GRSH/900



TMA CODE: 20012048
GEAR 2A 35 D

OEM 1116461

APLICACION: GRS/890-900 R
GRSH/900

Transmission



TMA CODE: 20012049
GEAR 1st 46 D

OEM 1476216 2028419
2034853

APPLICATION: GRS-GRSO/905 R



TMA CODE: 20012050
GEAR 2A 38 D.

OEM 1776318 2028645
1476210

APPLICATION: GR/875 R-905 R
GRS/895 R GRSGRSO/
905 R



TMA CODE: 2002051
REVERSE GEAR

OEM 1476272

APPLICATION: GR-GRS-
GRSO/905 R



TMA CODE: 20012052
GEAR 3a 32 D

OEM 1476202 2028686
1919174

APPLICATION: GRS-GRSO/905 R



TMA CODE: 20012053
SYNCHRONIZATION RING

OEM 1476232

APPLICATION: GR-GRS-
GRSO/905 R



TMA CODE: 20012054
PRIMARY SHAFT

OEM 1907384 1776321
1476194

APPLICATION: GRS-GRSO/905 R

Transmission



**TMA CODE: 20012055
CONSTANT GEAR 42 D**

OEM 1476254

APLICACION: GRS/895 R



**TMA CODE: 20012056
CONSTANT GEAR 42 D.**

OEM 1476250 2028674

APLICACION: GRS/905 R



**TMA CODE: 20012057
CONSTANT GEAR 34 D.**

OEM 1750421 2028680

APLICACION: GRSO/905R



**TMA CODE: 20012058
COUPLING FLANGE**

OEM 1750423 2028644
1476264

APLICACION: GRS-GRSO/905R



**TMA CODE: 20012059
GEAR 3A 34 D.**

OEM 1919170 2028687
1476256

APLICACION: GRS-GRSO/905 R



**TMA CODE: 20012060
GEAR M.A. 36 D.**

OEM 1476234

APLICACION: GRS-GRSO/905 R

Transmission



**TMA CODE: 20012061
SYNCHRONIZATION BODY**

OEM 1789137 1479532

APLICACION: GR/875 R-905 R
GRS/895 R GRSGRSO/
905 R



**TMA CODE: 20012062
SLIDING SLEEVE**

OEM 1514712

APLICACION: GR/875 R-905 R
GRS-GRSO/905 R



**TMA CODE: 20012063
CONSTANT GEAR 32 D**

OEM 1476192 2028675

APLICACION:GRS/895-905 R



**TMA CODE: 200120064
CONSTANT GEAR 40/36 D**

OEM 1476190 2028679

APLICACION: GRS/905 R



**TMA CODE: 20012065
SLIDING SLEEVE 30 D.**

OEM 1104058

APLICACION: GR/801-801 R



**TMA CODE: 20012066
SLIDING SLEEVE**

OEM 1104056

APLICACION: GR/801-801 R

Transmission



TMA CODE: 20012067
INPUT SHAFT 46 D.

OEM 1377307 1305455

APLICACION: GRS/890-900-920 R GRSH/900



TMA CODE: 20012068
CROWN ADAPTED

OEM 184490

APLICACION: GS/760-770 GR/860-870 GR/871-880



TMA CODE: 20012069
HOSE ADAPTED

OEM 194755 224085

APLICACION: GR/860-870-871 GRE/860-870-871



TMA CODE: 20012070
PINON SOLAR 17 D.

OEM 234768

APLICACION: GR/875 R-905 R GRS/895 R GRSGRSO/905 R



TMA CODE: 20012071
GEAR 4A 27 D.

OEM 234909

APLICACION: GR/860-870-871 GRE/860-870-871



TMA CODE: 20012072
GEAR 3A 30 D.

OEM 234910

APLICACION: GR-GRE/860-870

Transmission



**TMA CODE: 20012073
DRIVER GEAR**

OEM 360627

APLICACION: GR/871-880
GRH/880 NEW



**TMA CODE: 20012074
HOSE ADAPTED**

OEM 244620

APLICACION: GR/860-870
GR/871-880



**TMA CODE: 20012075
SYNCHRONIZATION CONE**

OEM 333547 194397

APLICACION: GR/860-870
GR/871-880



**TMA CODE: 20012076
RING ADAPTED**

OEM 254333

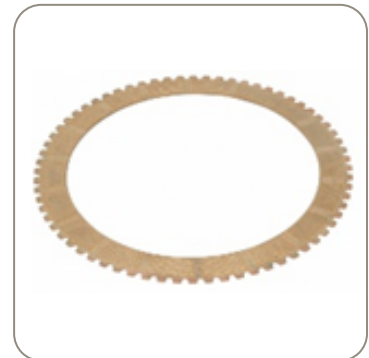
APLICACION: GR/860-870
GR/871-880



**TMA CODE: 20012077
SHIFT STOP**

OEM 264120

APLICACION: GR/860-870
GR/871-880

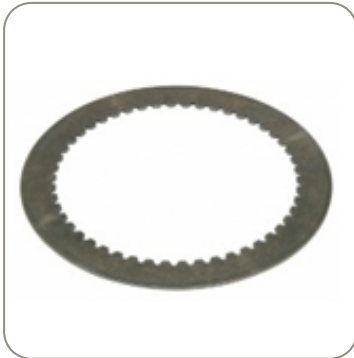


**TMA CODE: 20012078
OUTER DISK 68 D**

OEM 325114 194428

APLICACION: GS/760-770
GR/860-870 GR/871-880

Transmission



TMA CODE: 20012079
INNER DISC 50 D

OEM 194429

APLICACION: GS/760-770
GR/860-870 GR/871-880



TMA CODE: 20012080
INPUT SHAFT 23 D

OEM 391249

APLICACION: GR/871-871 T



TMA CODE: 20012081
INPUT SHAFT 23 D.

OEM 294903

APLICACION: GR-GRE/870-871



TMA CODE: 20012082
INPUT SHAFT 23 D.

OEM 294904

APLICACION: GR-GRE/870-871



TMA CODE: 20012083
FIXED HUD 37/30 D

OEM 1114838 244536

APLICACION: GR/860-870-871
GR-GRH/880



TMA CODE: 20012084
SUN GEAR 17 D

OEM 339800 317961

APLICACION: GR-GRE/870-871

Transmission



**TMA CODE: 20012085
COMPLETE SYNCHRONIZER**

OEM 244622

APLICACION: GR-GRE/86O-87O-871 GR-GRH/88O



**TMA CODE: 20012086
SYNCHRONIZATION BODY**

OEM 284675

APLICACION: GR/871-871 T-88O-88O T GRE/871 T GRH/88O



**TMA CODE: 20012087
SYNCHRONIZER**

OEM 244990

APLICACION: G/76O-761-764-77O GS/76O-77O-771-772 GR-GRE/86O-87O-871



**TMA CODE: 20012088
SYNCHRONIZER 1A/MA**

OEM 338706 244991

APLICACION: GR-GRE/86O-87O-871



**TMA CODE: 20012089
SYNCHRONIZER CONE**

OEM 325113 234890

APLICACION: G/76O-764-772-774 GR-GRE/86O-87O-871



**TMA CODE: 20012090
SYNCHRONIZER CONE**

OEM 332118

APLICACION: G/776-777 GS/771-772 GR-GRE/86O-87O-871

Transmission



**TMA CODE: 20012091
RING**

OEM 381226

APLICACION: GR-GRH/880



**TMA CODE: 20012092
Crown toothed kit**

OEM 1118030 1790598

APLICACION: GR/801-900
GRS/890-900-920 R
GRS/875 GRS-GRSO/895-905R



**TMA CODE: 20012093
SYNCHRONIZATION CONE**

OEM 1323147

APLICACION: GR/801-900
GRS/890-900-920R



**TMA CODE: 20012094
SYNCHRONIZATION CONE**

OEM 1304850 1789144

APLICACION: GR/801-900
GRS/890-900-920R



**TMA CODE: 20012095
SYNCHRONIZATION RING**

OEM 1395624 1118032
1400770

APLICACION: GR/801-900
GRS/890-900-920R



**TMA CODE: 20012096
CLUTCH SLEEVE**

OEM 1323145

APLICACION: GR/801-900
GRS/890-900-920
GRSH/900

Transmission



**TMA CODE: 20012097
SYNCHRONIZATION RING**

OEM 1883363 1770058
APLICACION: GR/875-875 R
GRS/895-895 R GRGRS-
GRSO/905-905 R



**TMA CODE: 20012098
SYNCHRONIZATION CONE**

OEM 1883350 1788170
APLICACION: GR/875-875 R
GRS/895-895 R GRGRS-
GRSO/905-905 R



**TMA CODE: 20012099
SYNCHRONIZATION CONE**

OEM 1883352 1788171 1491227
APLICACION: GR/875 R-905 R
GRS/895 R GRGRSO/
905 R



**TMA CODE: 20012100
plate**

OEM 2064207 1520797
APLICACION: GR/875-905 R
GRS-GRSO/895-905 R



**TMA CODE: 20012101
synchronization cone**

OEM 1926257
APLICACION: GR/875R 905R
GRS 895R 905R GRSO 895R
905R 925R



**TMA CODE: 20012102
synchronization cone**

OEM 1927003
APLICACION: GR 801R 900R
GRS 890R 900R 920R GRSH
900

Transmission



TMA CODE: 20012103
SYNCHRONIZATION RING

OEM 1925293

APLICACION: GR801 875R
905R
GRS895R905RGRSO905R925
R NEW



TMA CODE: 20012104
FORK

OEM 1523647

APLICACION: GR/875-905 R
GRS-GRSO/895-905 R



TMA CODE: 20012105
Grooved Nut M44x1,5

OEM 1461414 1114622

APLICACION: ALL



TMA CODE: 20012106
Clamp M44x1.5

OEM 1461417 1302791

APLICACION: ALL



TMA CODE: 20012107
REPAIR KIT

OEM 355708

APLICACION: GR-GRS/890-
900 R EK/300-310-330-
340 EK/630-640



TMA CODE: 20012108
PLUG

OEM 1753479 1335485

APLICACION: GR/801-900
GRS/890-900R

Transmission



**TMA CODE: 20012109
SLIDE**

OEM 1305676

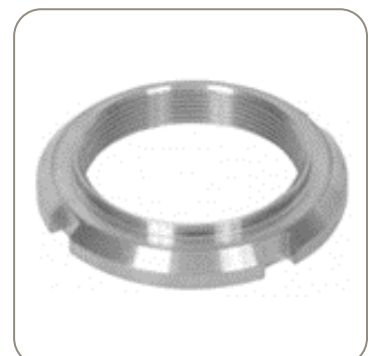
APLICACION: ALL



**TMA CODE: 20012110
WASHER**

OEM 1113911

APLICACION:GR/801-900
GRS/890-900-920



**TMA CODE: 20012111
NUT M50x1,5**

OEM 194484

APLICACION: ALL



**TMA CODE: 20012112
NUT M50X1.5**

OEM 315085

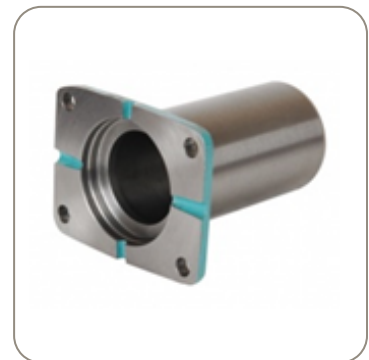
APLICACION: ALL



**TMA CODE: 20012113
NUT M44X1.5**

OEM 1525988 387877

APLICACION: ALL



**TMA CODE: 20012114
FRONT COVER**

OEM 1103619 382588

APLICACION:G/770-776-777
GS/771-772 GR/871-
880 GRH/880

Transmision



**TMA CODE: 2001215
FRONT COVER**

OEM 1312886 334389

APLICACION: G/770-776-777
GS/771-772 GR/871



**TMA CODE: 2001216
COVER**

OEM 315002

APLICACION: GS/770 GR/870
GRE/870



**TMA CODE: 2001217
COVER**

OEM 1312884 375761

APLICACION: GR-GRH/880



**TMA CODE: 2001218
PIN ADAPTED**

OEM 294427

APLICACION: GR/860-870-871-
880



**TMA CODE: 2001219
REPAIR KIT**

OEM 502286

APLICACION: GR/875 R-905 R
GRS/895 R GRGRSO/
905 R



**TMA CODE: 20012120
NUT**

OEM 1337266

APLICACION: GR/801-900R
GRS/890-900-920 R

Transmission



**TMA CODE: 20012121
OIL PUMP**

OEM 194838

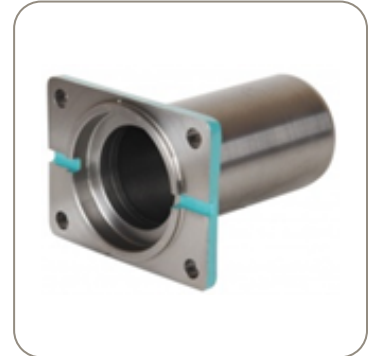
APLICACION: GR/860-870-871-880



**TMA CODE: 20012122
OIL PUMP**

OEM 1426449 1120646

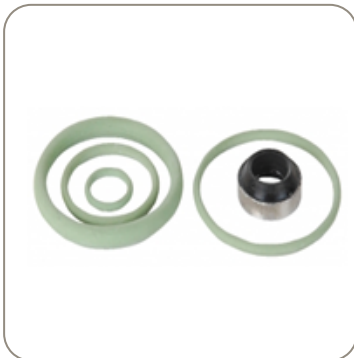
APLICACION: GR/801 GR-GRS/890-900-920



**TMA CODE: 20012123
SUPPORT SLEEVE**

OEM 1103934

APLICACION: GR/801-801R GR-GRS/900 GRH/900



**TMA CODE: 20012124
REPAIR KIT**

OEM 602615

APLICACION: GR/801-900 GRS/890-900-920 NEW



**TMA CODE: 20012125
REPAIR KIT**

OEM 602616

APLICACION: GR/801-900 GRS/890-900-920 OLD



**TMA CODE: 20012126
COVER**

OEM 1515430

APLICACION: GR-GRS/900R NEW

Transmission



**TMA CODE: 2001217
COVER**

OEM 1490549

APLICACION: GR/875-905 R
GRS-GRSO/895-905 R



**TMA CODE: 20011001
HUB**

OEM 1527253 1324866

APLICACION: EK/330-340
EK/630-640



**TMA CODE: 20011002
SLEEVE COMAND**

OEM 602577

APLICACION: EK/330-340
EK/630-640



**TMA CODE: 20011003
RETARDER INPUT SHAFT (23 T)**

OEM 1788763 1761621

APLICACION: GR/875R 905R
GRS/895R 905R GRSO/905R
925R



**TMA CODE: 20011004
RETARDER INPUT SHAFT
(NEW MODEL)**

OEM 1812447

APLICACION: GR / 875R - 905R
GRS / 895R - 905R
GRSO / 905R - 925R

Diferential



TMA CODE: 20011005
DIFERENCUAL GEAR KIT

OEM 703535

APLICACION: R/770-780
RV/760-761



TMA CODE: 20011006
SIDE GEAR (18 T)

OEM 1519391 1103474

APLICACION: R/770-780
RV/760-761



TMA CODE: 20011007
SIDE GEAR

OEM 1519390 194041

APLICACION: R/641-642-653
R/770-780 RV/654-
760-761 RB/652



TMA CODE: 2001008
SIDE PINION (11 T)

OEM 1519392 164417

APLICACION: R/641-642-653
R/770-780 RV/654-
760-761 RB/652



TMA CODE: 20011009
SPIDER

OEM 1785125 1450720

APLICACION: R/641-642-653
R/770-780 RV/654-
760-761 RB/652



TMA CODE: 20011010
DIFFERENTIAL HOUSING KIT

OEM 1788767 1425522

APLICACION: RB/662 RBP/735-
835

Diferential



**TMA CODE: 20011011
SHAFT (24/40/24 T)**

OEM 1857633
1510229 1788832 2018788
1936438

APLICACION: RB/662 RBP/735-
835



**TMA CODE: 20011012
WASHER**

OEM 1122989 1946057

APLICACION: RB/660-662
RBP/730-735-835



**TMA CODE: 20011013
GEAR WITH BUSHING (31 T)**

OEM 1408164 1408165

APLICACION: RBP/835



**TMA CODE: 20011014
GEAR WITH BUSHING (29 T)**

OEM 1745699 1787226

APLICACION: RBP/835



**TMA CODE: 20011015
CONSTANT GEAR (31 T)**

OEM 1408179

APLICACION: RBP/835



**TMA CODE: 20011016
GEAR 29 D.**

OEM 1745701

APLICACION: RBP/835

Diferential



**TMA CODE: 20011017
LOCKING SLEEVE**

OEM 1408221

APLICACION: RBP/730-735-835
RB/660-662



**TMA CODE: 20011018
SOLAR PINION 24 D.**

OEM 387901

APLICACION: RBP-RP/830-831
OLD



**TMA CODE: 20011019
PINON SOLAR 24 D.**

OEM 1103346

APLICACION: RBP-RP/830-831
NEW



**TMA CODE: 20011020
PINON SATELITE 10 D.**

OEM 390311

APLICACION: RBP-RP/830-831



**TMA CODE: 20011021
GEAR 28 D.**

OEM 1352800

APLICACION: RBP-RP/832



**TMA CODE: 20011022
PINON SATELITE 12 D.**

OEM 1117809

APLICACION: RBP-RP/832

Diferential



**TMA CODE: 20011023
DIFFERENTIAL LOCK SLEEVE**

OEM 1103386

APLICACION: R/770-780-782
NEW



**TMA CODE: 20011024
DIFFERENTIAL LOCK SLEEVE**

OEM 372309

APLICACION: R/641-642
RV/760 OLD



**TMA CODE: 20011025
SHAFT (24/40/24 T)**

OEM 1422488 1336288

APLICACION: RB/660



**TMA CODE: 20011026
IDLER GEAR WITH BUSHING
(29 T)**

OEM 1745697

APLICACION: RB/662 RBP/735



**TMA CODE: 20011027
IDLER GEAR WITH BUSHING
(24 T)**

OEM 1414549 1414550

APLICACION: RB/660



**TMA CODE: 20011028
INTERMEDIATE
DIFFERENTIAL HALF CASE**

OEM 1122910 1122911

APLICACION: RB/660 RBP/730
731

Diferential



TMA CODE: 20011029
SCREW M12X50

OEM 1757877 1344182

APLICACION: RB/660 RBP/730
731



TMA CODE: 20011030
AXLE SHAFT GEAR (18 T/24 SPL)

OEM 1862032 1540458

APLICACION: RB/662 RBP/735
736



TMA CODE: 20011031
CONSTANT GEAR (29 T/24 SPL)

OEM 1745700

APLICACION: RB/662 RBP/735
736



TMA CODE: 20011032
COULING RING

OEM 1337824

APLICACION: RB/66 RBP/730



TMA CODE: 20011033
IDLER GEAR WITH BUSHING (24 T)

OEM 1336290

APLICACION: RB/660



TMA CODE: 20011034
CONSTANT GEAR (24 T)

OEM 1336294

APLICACION: RB/660 RBP/735
736

Diferential



**TMA CODE: 20011035
CONSTANT GEAR (22 T)**

OEM 1337823

APLICACION: RBP/730



**TMA CODE: 20011036
SHAFT**

OEM 1540472

APLICACION: RB/662



**TMA CODE: 20011037
SHAFT**

OEM 1528052

APLICACION: RBP/835



**TMA CODE: 20011038
SHAFT**

OEM 1528051

APLICACION: RBP/735-736



**TMA CODE: 20011039
SHAFT**

OEM 1379306

APLICACION: RB/660

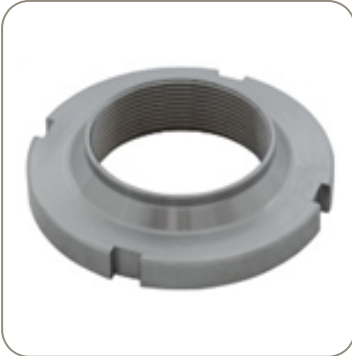


**TMA CODE: 20011040
GROOVED NUT**

OEM 244377

APLICACION: RB/652 RBP/830-831-832

Diferential



TMA CODE: 20011041
GROOVET NUT

OEM 1338267 375386

APLICACION:RB/652-660-662
RBP/730-735-736
RBP/831-832-835

Engine



**TMA CODE: 20010001
OIL PUMP**

OEM 1448659 2O28987
1888O25

APLICACION: DC-DSC/12 NEW



**TMA CODE: 20010002
OIL PUMP**

OEM 1345719

APLICACION: DC-DSC/12 360-
400 OLD



**TMA CODE: 20010003
OIL PUMP**

OEM 1323823

APLICACION: DS-DSC/14



**TMA CODE: 20010004
OIL PUMP**

OEM 137O254

APLICACION: DSC/ 14



**TMA CODE: 20010005
OIL PUMP**

OEM 263161

APLICACION: DSC/ 14 OLD



**TMA CODE: 20010006
OIL PUMP**

OEM 18875O6 1369981
3O1473 1318O91

APLICACION: DS/11 DSC/11

Engine



**TMA CODE: 20010007
REPAIR KIT, OIL PUMP**

OEM 703502

APLICACION: ALL



**TMA CODE: 20010008
WATER PUMP**

OEM 1508533 1353072
1896752

APLICACION: DC/9 DSC/11 D/9-
11-12 D/12A-12M



**TMA CODE: 20010009
WATER PUMP HOUSING**

OEM 1450153 1376495

APLICACION: DSC/9 D/9-11-12



**TMA CODE: 20010010
WATER PUMP**

OEM 1789522 1546188

APLICACION: DC/9-9A-12 D/9-
11-12 SG9 A280-BUS



**TMA CODE: 20010011
WATER PUMP**

OEM 1508532 1508534
1365841

APLICACION: DC/9-9A-12 D/9-
11-12 SG9 A280-BUS



**TMA CODE: 20010012
COOLING PUMP**

OEM 1787121 1528348

APLICACION: DC/9-12 D/9-11-12
SG9 A280-BUS

Engine



TMA CODE: 20010013
SYNCHRONIZATION CONE

OEM 1787120

APPLICATION: DC/9 9A 12 12A
D/9 11 12 SG 9 A280 BUS



TMA CODE: 20010014
SYNCHRONIZATION CONE

OEM 805021

APPLICATION: D/14



TMA CODE: 20010015
SYNCHRONIZATION RING

OEM 805023

APPLICATION: DC/9 12 DSC/11
D/9 11 12 12A 12M



Jan TÜRKOĞLU: +90 544 667 51 33 / +51 900 522 490
Sadetin İÇÖZ: +90 542 764 49 94

sales@tmatruckparts.com

www.repuestoparacamion.com

www.tmatruckparts.com